

Scuola Internazionale di Scienze Pediatriche

Director

Lorenzo Moretta

Directors of the course

Jean Pierre Grunfeld, Paris

Rosanna Gusmano, Genoa

Francesco Perfumo, Genoa

Roberto Ravazzolo, Genoa

Invited Speakers

Qais Al-Awqati, New York

Corinne Antignac, Paris

Charles Babinet, Paris

Alessandra Boletta, Milan

Giovanni Candiano, Genoa

Peter Deen, Nijmegen

Christa Flück, Bern

Francesco Frassoni, Genoa

Ali G. Gharavi, New York

Marie Claire Gubler, Paris

Jean Louis Guenet, Paris

Nine Knoers, Nijmegen

Martin Konrad, Marburg

Chantal Loirat, Paris

Cathy Mendelsohn, New York

Luca Musante, Genoa

Albert C. Ong, Sheffield

Marco Pontoglio, Paris

Roberto Ravazzolo, Genoa

Cecilia Sarto, Milan

Roser Torra, Barcelona

Seppo Vainio, Oulu

Adrian Woolf, London

Scientific Secretariat

Nephrology Department

G. Gaslini Institute

L.go G. Gaslini 5, 16147 Genova

Tel. 010 5636.552

e-mail: nfroigg@tin.it

Organizing Secretariat

M. Aloe

Direzione Scientifica

Istituto G. Gaslini

L.go G. Gaslini 5, 16147 Genova

tel. 010 5636554 fax 010 3776590

e-mail: sisp@ospedale-gaslini.ge.it

site: www.sispge.com

Information

Registration

The course is open to medical doctors, biologists and technicians. Only 100 applicants will be admitted.

Fill in the attached form and return it to the organizing secretariat by May 2, 2006.

A limited number of **FELLOWSHIPS** are available. For the criteria for the assignment of them, check the sites:

www.geneandkidney.it or

www.sispge.com

Applications for fellowships can only be accepted until April 15, 2006

The registration fee of euros 350,00

(Reduced fees: € 175,00 for residents € 100,00 for one day only) entitles to scientific programme, book of abstracts, coffee breaks and lunches, attendance certificate. It can be paid - after confirmation of admission from the organizing secretariat.

The course is free for the staff of Gaslini Institute.

Venue

Biblioteca Berio, Sala dei Chierici

Via del Seminario 16 - Genoa, Tel. 010 5576010

How to reach the venue

Plane: from the int. Airport C. Colombo take shuttle bus n. 100 (runs every 30") to the city centre and get off halfway Via XX Settembre, turn into Via Fieschi, Berio Library is on the left in Via del Seminario, just beside the music store "Ricordi".

Train: get off at Genova-Brignole railway station and take buses n. 17, or 18 or 19, then get off halfway Via XX Settembre, cross it and turn into Via Fieschi, Berio Library is in Via del Seminario, just beside the music store "Ricordi".

Car: motorway exit Genova ovest, take "sopraelevata" exit city centre - P.zza Piccapietra. Go straightway toward P.zza De Ferrari and after crossing it, take the second road on the left and just before the tunnel turn on the left into Via Fieschi. Berio Library is in Via del Seminario, just beside the music store "Ricordi".

Accommodation

Owing to the various events planned in Genoa, it might be difficult to find a room. Please make your arrangements well in advance. Special rates have been arranged at the following hotels (please mention Gaslini Institute)::

Hotel Hermitage 010 311605

Hotel Moderno Verdi 010 5532104

Hotel Helvetia 010 2465468

Hotel Viale Sauli 010 561397

Italian CME credits

Italian CME credits have been required for Medical doctors, Biologists and Technicians

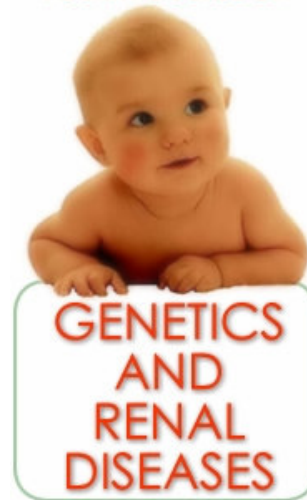


Scuola Internazionale
di Scienze Pediatriche



Istituto Giannina Gaslini
Genova

FOURTH COURSE ON



June 8-10, 2006
Biblioteca Berio, Sala dei Chierici

Directors:

Jean Pierre Grunfeld
Rosanna Gusmano
Francesco Perfumo
Roberto Ravazzolo



Fondazione Gerolamo Gaslini



PROGRAMME

Thursday June 8, 2006

8.30 *Participants registration*

8.50 *Welcome to participants*

RENAL DEVELOPMENT AND RELATED DISORDERS (*Coordinator: S. Vainio*)

9:00 **Kidney as a developmental model system**

S. Vainio

9:45 **Development of urinary tract**

C. Mendelsohn

10:30 *Break*

ANIMAL MODELS OF RENAL DISEASE

11:00 **The production of animal models with chemical mutagens: phenotype and genotype driven strategies**

J. L. Guenet

11:45 **Targeted mutagenesis in embryonic stem cells as a way to create animal models of human diseases**

C. Babinet

12:30 *Lunch*

GENOMIC AND PROTEOMIC TOOLS TO INVESTIGATE THE GENETIC BASIS OF RENAL DISEASES

(*Coordinator: R. Ravazzolo*)

14:00 **Introduction to genomic tools**

R. Ravazzolo

14:45 **Genomic approach to the study of kidney and ureteral tract malformations**

A. G. Gharavi

15:30 **Introduction to proteomic tools**

G. Candiano

16:15 *Break*

16:45 **Urinary proteins**

L. Musante

17:30 **What is new on renal cell carcinoma proteome**

C. Sarto

Friday June 9, 2006

GENETICS OF GLOMERULAR AND TUBULAR DISORDERS

(*Coordinator: C. Antignac, M. Konrad*)

8:45 **Genetics of nephrotic syndrome**

C. Antignac

9:30 **Alport syndrome and benign familial hematuria**

R. Torra

10:15 **Hereditary hemolytic-uremic syndrome**

C. Loirat

11:00 *Break*

11:30 **Tubular dysgenesis and the renin-angiotensin system**

M. G. Gubler

12:15 **Genetics of hypomagnesemia**

M. Konrad

13:00 *Lunch*

14:00 **Genetics of hypophosphatemic rickets**

C. Fluck

14:45 **Nephrogenic diabetes insipidus: do pharmacochaperones provide the cure?**

P. Deen

CYSTIC RENAL DISEASES

15:30 **Spatial and functional regulation of the polycystin complex**

A.C. Ong

16:15 *Break*

16:45 **Developmental and postnatal function of HNF1 alpha and beta**

M. Pontoglio

17:30 **The role of polycystin in renal tubulogenesis**

A. Boletta

ORAL COMMUNICATIONS

18.00 **Genetic abnormalities in factor H (CFH) and membrane cofactor protein (MCP) concur to determine susceptibility to hemolytic uremic syndrome**

F. Castelletti

18.07 **Complement factor H mutation in familial thrombotic thrombocytopenic purpura with ADAMTS13 deficiency and renal involvement**

J. Caprioli

18.14 **Toward the identification of the gene of the glomerulopathy with fibronectin deposits**

F. Mari

Saturday June 10, 2006

MALFORMATIVE SYNDROMES

(*Coordinator: N. Knoers*)

8:45 **Malformative syndromes with renal involvement**

N. Knoers

9:30 **FRAS/FREM gene mutations cause human and mouse Fraser syndromes and lead to renal aplasia and polycystic diseases**

A. Woolf

10:15 *Break*

GENETIC BASIS OF TISSUE REGENERATION

10:45 **Therapeutic perspective of stem cells**

F. Frassoni

11:30 **Stem cells in the adult kidney and their possible role in renal repair**

Q. Al-Awqati

12:15 *Concluding remarks*

Final test

13:00 *Lunch*